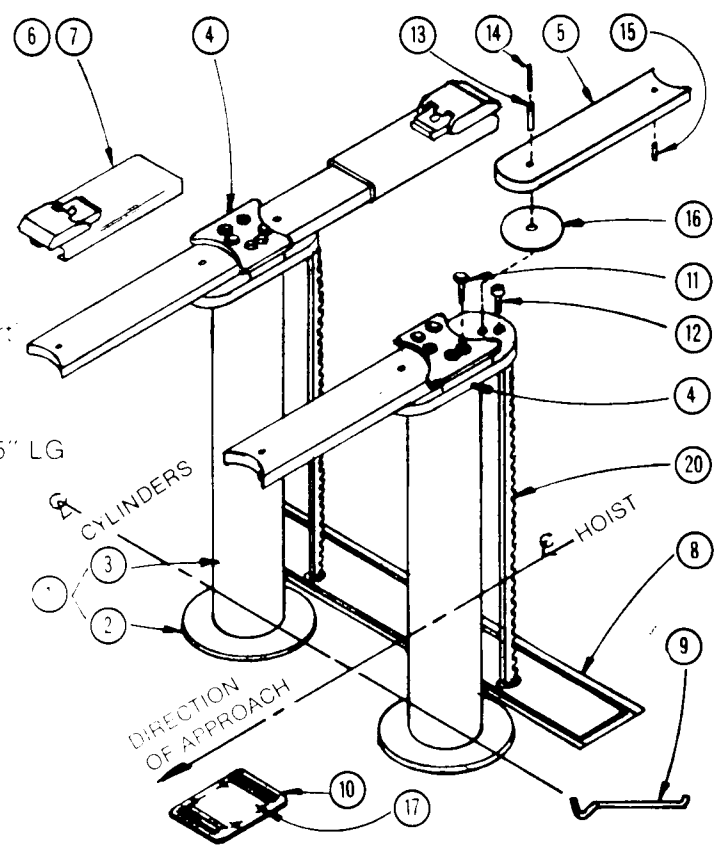


**PARTS LIST**

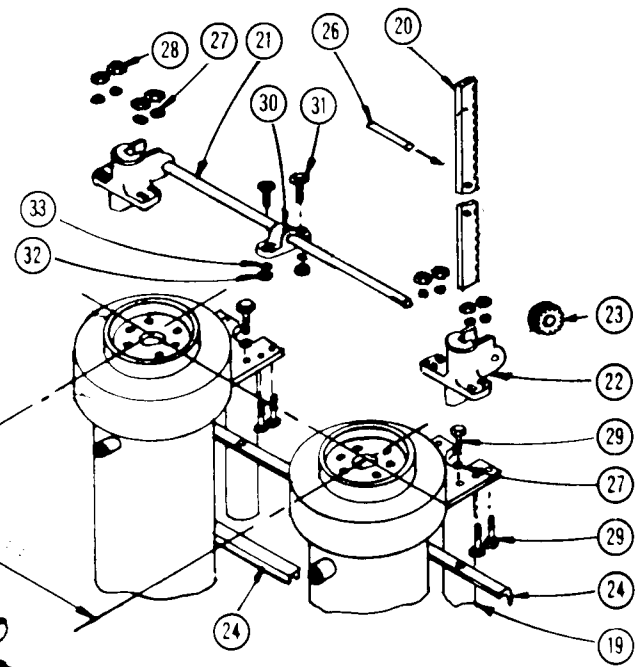
ITEM	QTY.	PART No.	DESCRIPTION
1	2	101950	Cylinder Assembly
2	2	101952	Cylinder Casing Only
3	2	101951	Plunger Assembly
4	2	101955	Bolster
5	4	101658	Swivel Arms
6	4	101655	Pad and Sleeve Assembly (Std)
7	4	100776	Pad and Sleeve Assembly (Short)
8	1	101224	Pitform
9	1	100778	Positioning Rod
10	1	100199	Wheelstop
11	12	11373	Hex. Hd. Bolt — 3/4" - 10 NC x 5" LG
12	2	10193	Soc. Hd. Cap Scr. — 5/8" - 11 NC x 1-1/4" LG
13	4	10980	1/2" x 2-1/2" Spring Pin
14	4	10983	5/16" x 2-1/2" Spring Pin
15	4	11765	3/8" x 1-1/2" Spring Pin
16	1	100196	Washer
17	4	10960	Rawl Drive Pin



**STABILIZER ASSEMBLY**

18	1	103188	Stabilizer Kit (*Items Incl.)
*19	2	102581	Stabilizer Housing
*20	2	102578	Stabilizer Rack
*21	1	101223	Stabilizer Shaft 90" LG
*22	2	102582	Stabilizer Bearing
*23	2	101868	Stabilizer Gear
24	1	101222	Cyl. Spacer Angle
25	1	101221	Cyl. Spacer Channel
26	2	101999	Safety Bar — 9/16" x 10" LG
*27	12	10679	Lockwasher — 1/2"
*28	8	10592	Hex. Nut — 1/2" — 13 NC
*29	12	10048	Hex. Hd. Blt. — 1/2" - 13 NC x 2-1 4" LG
*30	1	11197	Pillow Block
*31	2	10028	Hex. Hd. Blt. — 3/8" - 16 NC x 1-3 4" LG
*32	2	10590	Hex. Nut — 3/8" - 16 NC
*33	2	10677	Lockwasher — 3/8"

**STABILIZER ASSEMBLY**



**PAD AND SLEEVE ASSEMBLY (4 POSITION)**

34	1	100772	Swivel Base
35	1	100774	Swivel Pin
36	1	100773	Swivel Pad
37	1	101656	Sliding Base (Std.)
38	2	11026	Stop Pin
39	1	100777	Sliding Base (Short)

**\*\*CONTROLS**

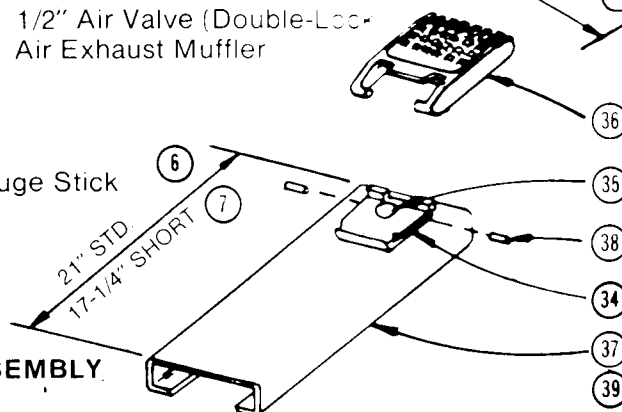
40	1	11398	1" Oil Valve
41	1	11093	1/2" Air Valve (Double-Loc)
42	1	10932	Air Exhaust Muffler

For detail of Cylinders see page 19

For Oil Tank and Oil Gauge Stick see page 22

For Air and Oil Valves see page 18

**PAD AND SLEEVE ASSEMBLY (4 POSITION)**



**NOTE:** When ordering replacement Stabilizer Parts please specify **85" Cylinder Centres and Serial Number**