

**PARTS LIST**

ITEM	QTY.	PART No.	DESCRIPTION
<b>FS-10-AS</b>			
1	1	100022	Cylinder Assembly
2	1	100023	Cylinder Casing Only
3	1	100024	Plunger Assembly
4	1	100779	Oil Gauge Stick

<b>FS-10-BS AND BSL</b>			
1	1	101208	Cylinder Assembly
2	1	101834	Cylinder Casing Only
3	1	101870	Plunger Assembly

<b>FS-10-ASL</b>			
1	1	100027	Cylinder Assembly
2	1	103576	Cylinder Casing Only
3	1	100029	Plunger Assembly
5	1	101604	Oil Gauge Stick

<b>*CONTROLS</b>			
6	1	10932	Air Exhaust Muffler
7	1	11092	1/2" Air Valve (Non-Lock)

6	1	10932	Air Exhaust Muffler
8	1	11093	1/2" Air Valve (Double-Lock)
9	1	11398	1" Oil Valve

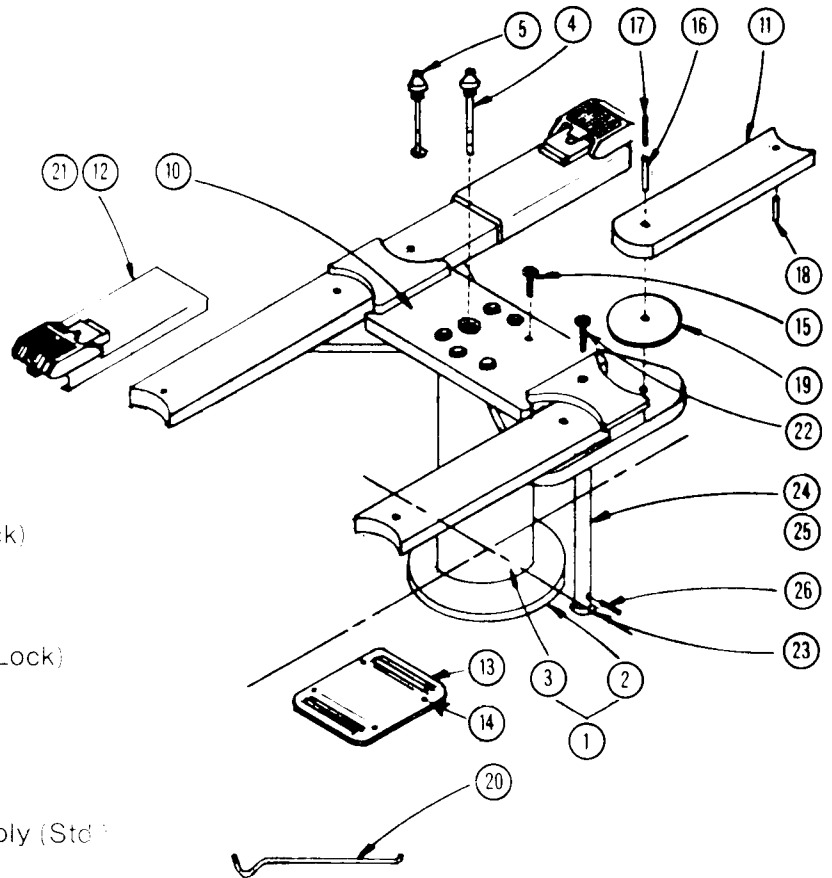
<b>COMMON PARTS</b>			
10	1	101405	Bolster Assembly
11	4	101658	Swivel Arms
12	4	101655	Pad and Sleeve Assembly (Std)
13	1	100199	Wheelstop
14	4	10960	Rawl Drive Pins
15	6	10076	Hex. Hd. Bolt — 7/8" - 9 NC x 3" LG
16	4	10980	1/2" x 2-1/2" Spring Pin
17	4	10983	5/16" x 2-1/2" Spring Pin
18	4	11765	3/8" x 1-1/2" Spring Pin
19	4	100196	Washer
20	1	100778	Positioning Rod
21	4	100776	Pad and Sleeve Assembly (Short)

<b>NON-ROTATOR</b>			
22	1	11217	Hex. Hd. Bolt — 1" - 8 NC x 4-1/2" LG
23	1	100757	Non-Rotator Casing
24	1	102545	Non-Rotator Plunger (Auto)
25	1	100762	Non-Rotator Plunger (Manual)
26	1	102649	Safety Bar

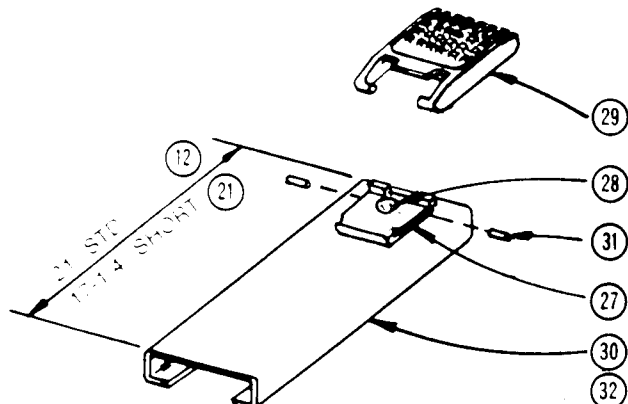
<b>PAD AND SLEEVE ASSY. (4 POSITION)</b>			
27	1	100772	Swivel Base
28	1	100774	Swivel Pin
29	1	100773	Swivel Pad
30	1	101656	Sliding Base (Std)
31	2	11026	Stop Pin
32	1	100777	Sliding Base (Short)

\*For Air and Oil Valves see page 18

For BS and BSL Oil Tanks and Oil Gauge Stick see page 22



**PAD AND SLEEVE ASSEMBLY (4 POSITION)**



For detail of Cylinders see pages 19, 20 and 21